

Building Skills for Unemployed and Underemployed Labour (B-SkillFUL) Phase II

B-SkillFUL Phase II is a skills and enterprise development programme, funded by the Swiss Agency for Development and Cooperation (SDC) and implemented by Swisscontact. It contributes to Switzerland's overall goal in Bangladesh, which is to bring about a more equitable society that enjoys inclusive and sustainable growth, aligned with the 2030 Agenda of the United Nations.

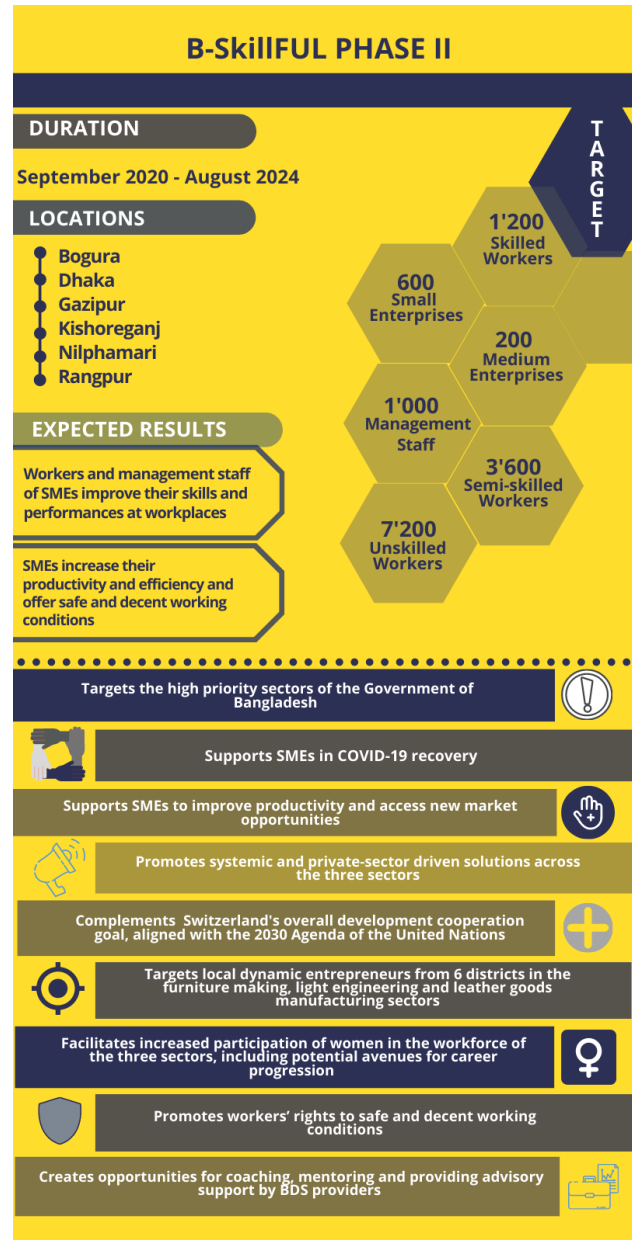
After a successful completion of Phase I, B-SkillFUL Phase II commenced operations from September 2020 with the aim to improve productivity and competitiveness of small and medium enterprises (SMEs) and create better jobs in the furniture making, light engineering and leather goods manufacturing sectors across six districts in Bogura, Dhaka, Gazipur, Kishoreganj, Nilphamari and Rangpur.

Recognising the importance of domestic economic recovery, in the COVID-19 scenario, B-SkillFUL Phase II offers customised solutions to SMEs to improve technical and management capabilities, modernise production methods, diversify products and services, expand into new markets and ensure safe and decent working conditions for workers. The solutions are designed to address specific constraints identified through detailed analyses at the sector and SME levels.

The programme also creates opportunities for coaching, mentoring, and providing advisory services to SMEs through Business Development Service (BDS) providers. These services include business planning, human resource development, product design, production improvements, inventory control, marketing, and finance. BDS providers can gain access and opportunities to engage with SMEs in peri-urban and rural areas and expand their clientele beyond the major cities.

The two major intervention areas include:

- workplace-based training, coaching and mentoring services for unskilled, semi-skilled and skilled workers and management staff at SMEs; and
- specialised BDS targeting production methods and working conditions in SMEs.



Programme Goals

By 2024, B-SkillFUL Phase II will ensure:

- At least 12'000 workers and 1'000 management staff at SMEs have improved their employability and performances at workplaces; and
- At least 800 SMEs have increased productivity and efficiency, and improved working conditions.