

# PERSPECTIVES FOR RETURNEES THROUGH SOCIAL AND PROFESSIONAL INTEGRATION

  
swisscontact

FUNDACIÓN  
SUIZA PARA LA  
COOPERACIÓN  
TÉCNICA





# ABOUT US



**Swisscontact**, founded in 1959, is a **non-profit development organization** that focuses on private sector-led, sustainable economic development to improve the quality of life in developing and emerging countries. Our work emphasizes **enhancing individual skills** and **fostering business competitiveness**.



# OUR MISSION STATEMENT

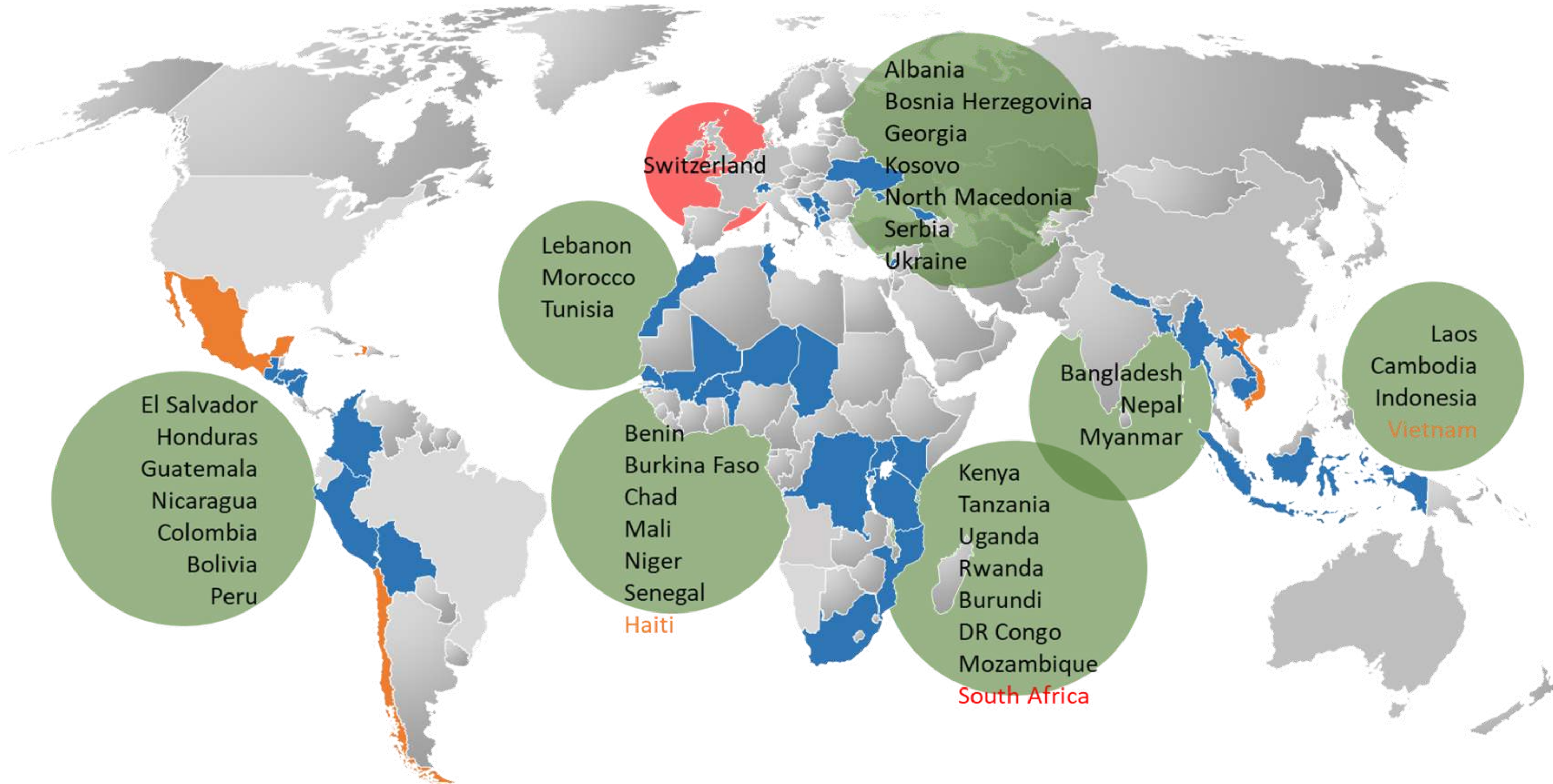


“We unleash the **potential** of private initiative to **foster sustainable development** and **shared prosperity** in developing and emerging economies.”



# SWISSCONTACT AROUND THE WORLD

## 130+ PROJECTS | 7 REGIONS | 42 COUNTRIES





# OUR EXPERTISE



Initial Vocational  
Education and Training



Labour Market  
Insertion



Upskilling and  
Reskilling



Entrepreneurial  
Ecosystem



Green Cities



Sustainable  
Agriculture



Trade



Tourism



# WHY WORKING WITH US? OUR VALUE PROPOSITION



Contribution to SDGs

Resilient Livelihoods



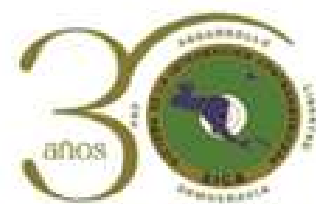
Customized Solutions to Inclusive Development





Secretaría de la Integración Social  
Centroamericana

Por una Región SICA con inclusión, bienestar y equidad



**SICA**

Sistema de la Integración  
Centroamericana



german  
cooperation

DEUTSCHE ZUSAMMENARBEIT

**KFW**

 **swisscontact**

# Perspectives for Returnees through Social and Professional Integration





# PROJECT GOAL

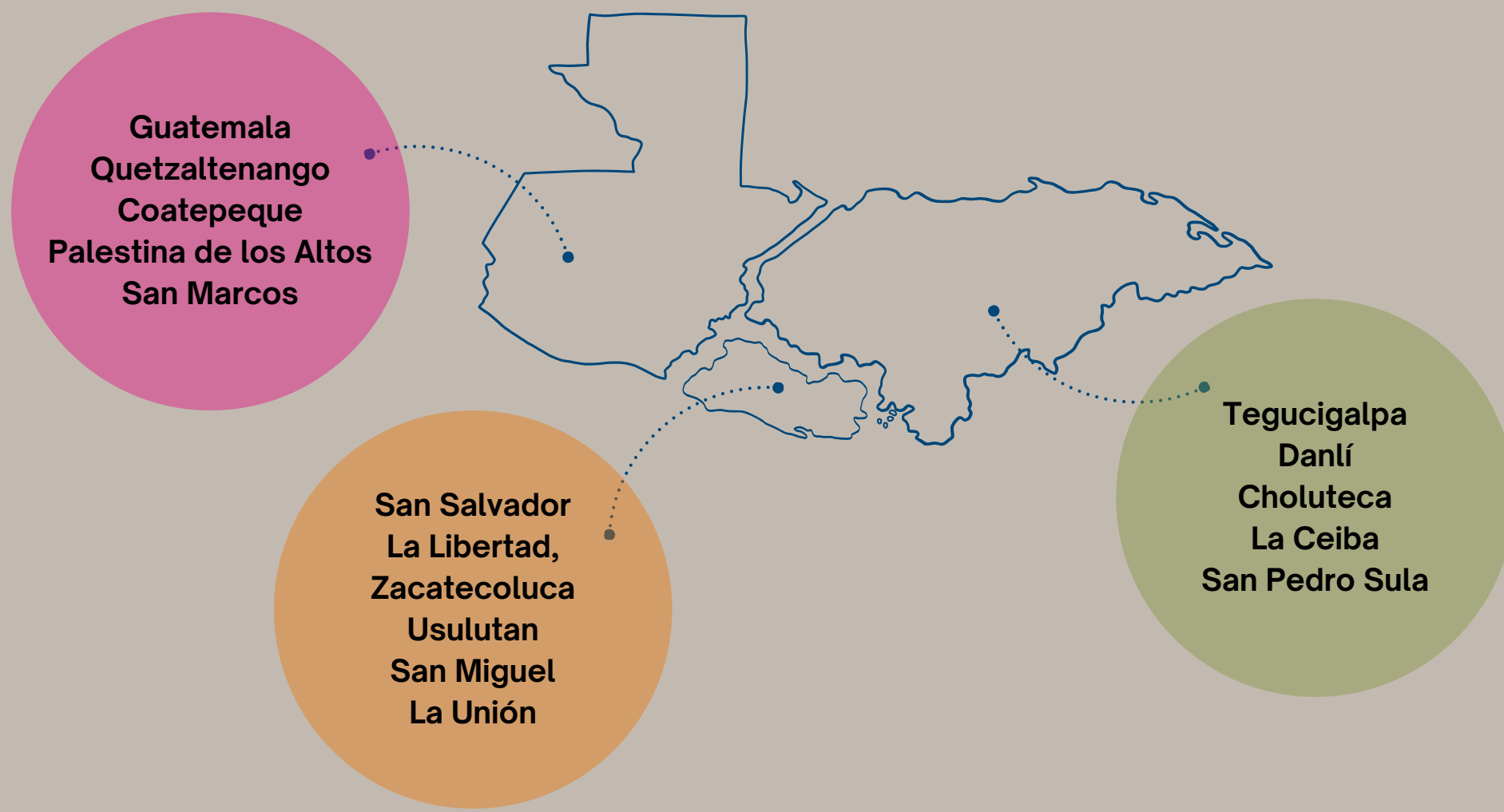


The "**Perspectives for Returnees through Social and Professional Integration**" program strives to enhance the **social** and **occupational integration** of individuals who have returned and those at risk of irregular migration.





# PROJECT INFLUENCE ZONE: NORTHERN TRIANGLE





# BENEFICIARY GROUPS

Different Types of Returnees to Include:

- **Young people with limited professional experience**, who may have returned during or after their trip to the US.
- **Adults who have lived in the US for an extended period of time**, and have gained some professional experience.
- **Entire families who have migrated** individually or in groups and have resided in the US for several years.





# EXPECTED OUTCOMES



1

Improve the returned migrants and other beneficiaries services support system



3

Enable an appropriate the system to integrate beneficiaries



2

Returned migrants and other beneficiaries use the support system



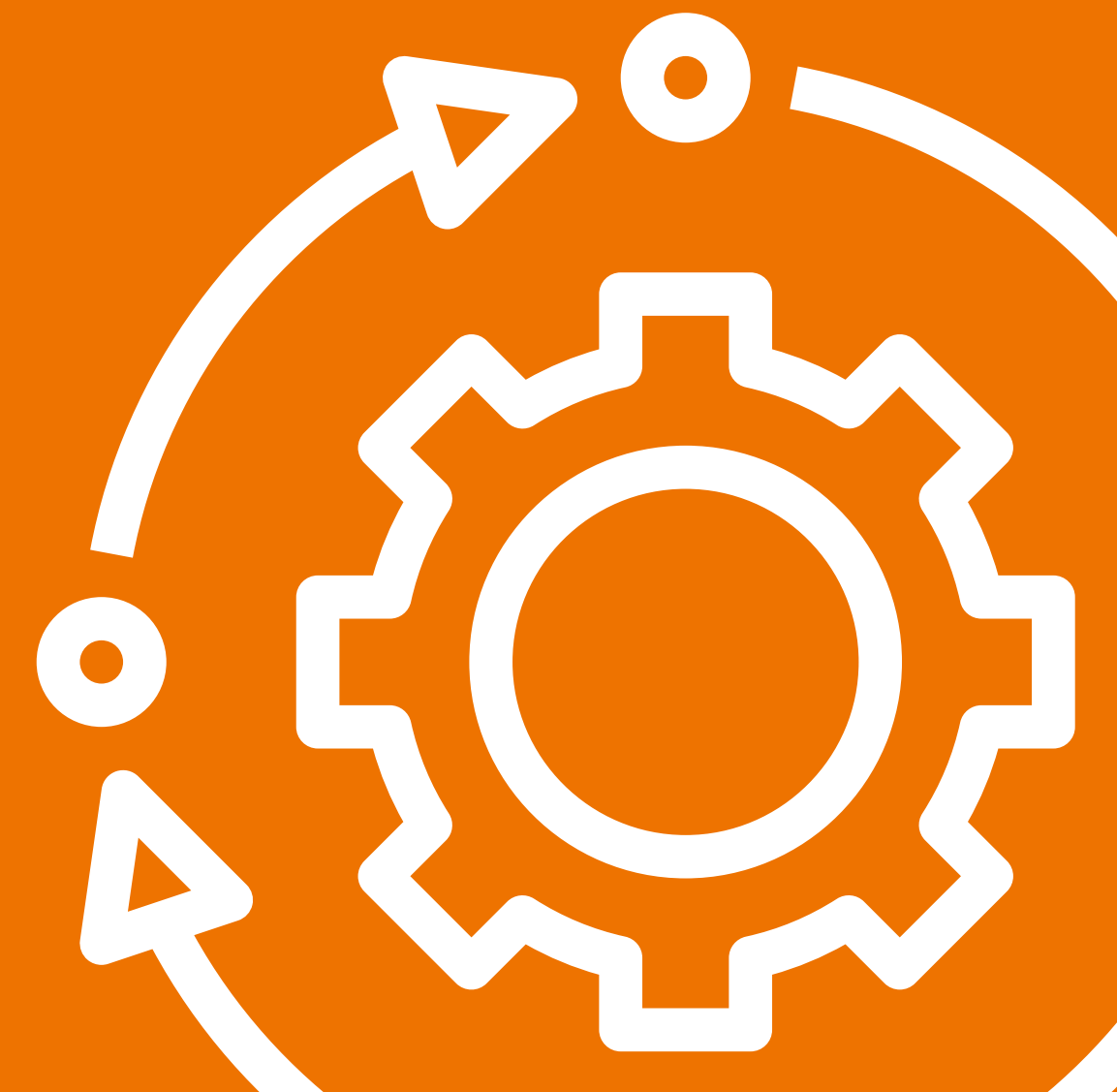


# IMPROVE THE RETURNED MIGRANTS AND OTHER BENEFICIARIES SERVICES SUPPORT SYSTEM



Here's a breakdown of some of our activities in this component:

- Conduct a labor market assessment
- Consolidate the Returned Migrants Attention Model
- Offer training to our partner organizations
- Establish an observatory in selected provinces
- Encourage migrant attention certifications with private sector partners and community leaders
- Provide technical assistance to municipalities and other institutions involved in public policy advocacy
- Create an infrastructure fund for partner equipment
- Develop and implement private sector engagement models





# RETURNED MIGRANTS AND OTHER BENEFICIARIES USE THE SUPPORT SYSTEM



The Following is a breakdown of this component activities:

- Designing a financing and vendor management system for the project beneficiaries' services.
- Implementation of attention services for returned migrants.
- Training and development of service providers within the system.
- Creation, implementation, and promotion of financial services for returned migrant entrepreneurs and their companies.





# ENABLE AN APPROPRIATE THE SYSTEM TO INTEGRATE BENEFICIARIES



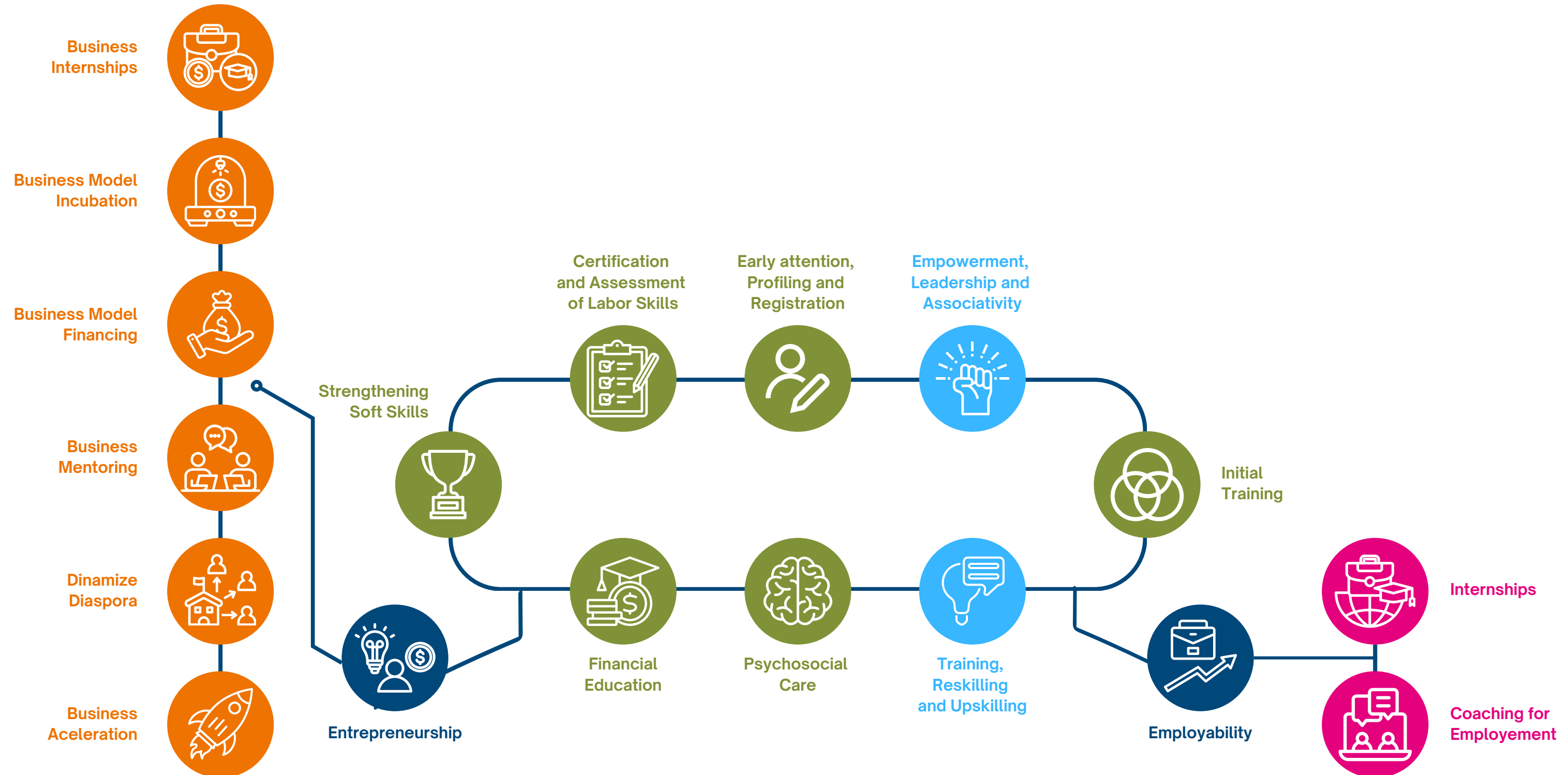
Outlined below are the activities we will be undertaking for this component:

- Creating and launching awareness campaigns in selected communities.
- Offering leadership training to returned migrants to encourage their involvement in their communities.
- Identifying affirmative actions focused on preventing migration.
- Conducting community events to promote cultural attachment among returned migrants.





# ACCESING OUR REINTEGRATION SERVICES SYSTEM





**TO LEARN MORE AND EXPLORE POTENTIAL  
PARTNERSHIPS, PLEASE FEEL FREE TO REACH OUT**



**Colin Banning**  
National Coordinator  
Guatemala  
+502 3067 4894  
[colin.banning@swisscontact.org](mailto:colin.banning@swisscontact.org)



**Mirian Urías**  
National Coordinator  
El Salvador  
+503 7725 2628  
[mirian.urias@swisscontact.org](mailto:mirian.urias@swisscontact.org)



**Carlos Suazo**  
National Coordinator  
Honduras  
+504 9726 5681  
[carlos.suazo@swisscontact.org](mailto:carlos.suazo@swisscontact.org)



# OUR DONOR AND IMPLEMENTATION PARTNER



This project is funded by the German cooperation through the German Development Bank Kreditanstalt für Wiederaufbau (KfW) and implemented by Swisscontact alongside the Secretariat of Central American Social Integration (SISCA).



Secretaría de la Integración Social  
Centroamericana  
Por una Región SICA con inclusión, bienestar y equidad





# THANK YOU!



Guatemala:

18 Avenida B 8-94 Zona 15 Vista Hermosa I,  
Ciudad de Guatemala, Guatemala.  
Tel: +502 2369-8798

El Salvador:

Residencial Escalonia y Calle Escalonia Casa # 14-E  
Colonia Escalón, San Salvador.  
Tel: +503 2262-0680

Honduras:

Centro de Negocios La Reforma,  
Col. La Reforma Tegucigalpa.  
Tel: +504 2239-8846

[www.swisscontact.org](http://www.swisscontact.org)

